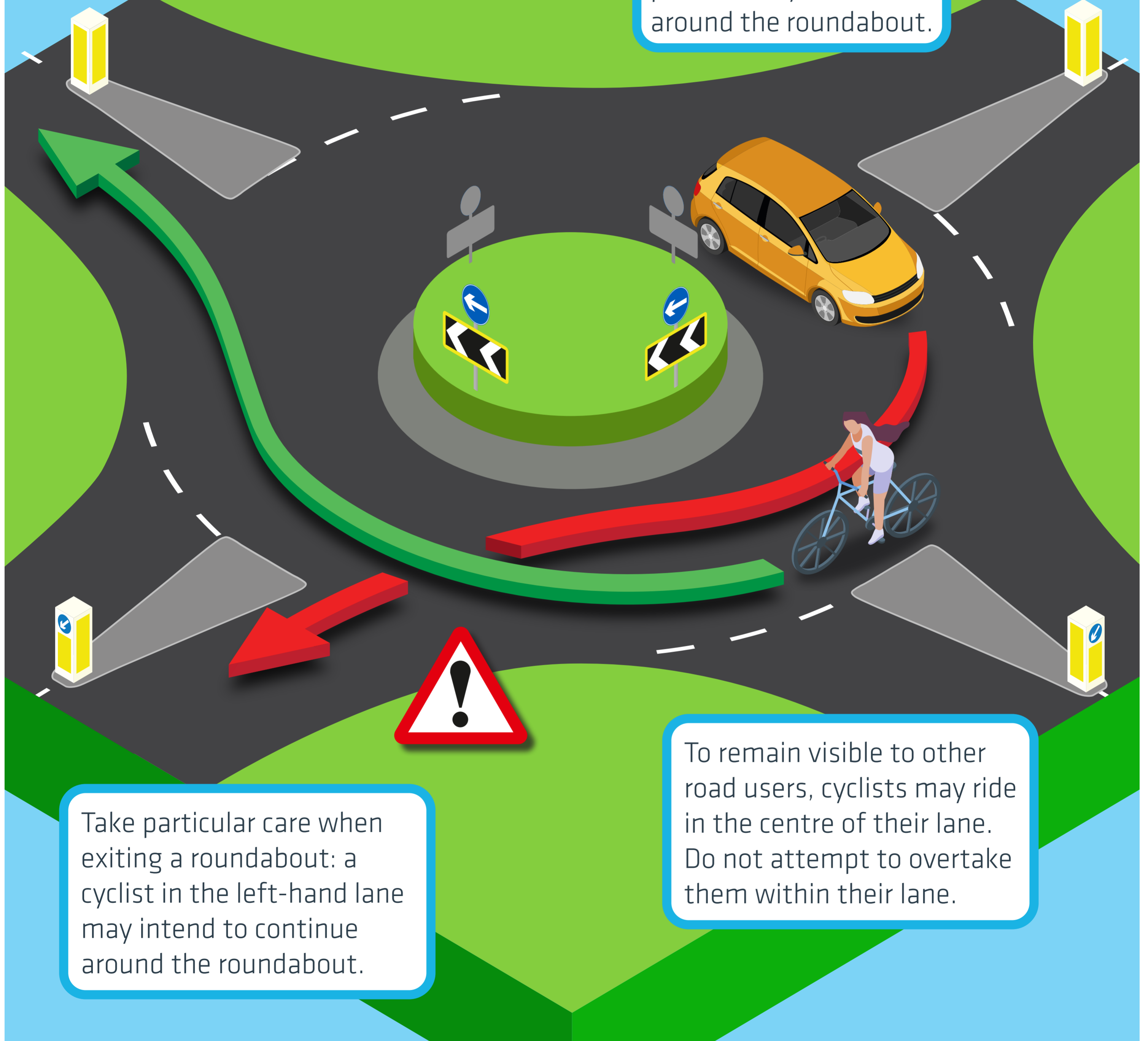


Cyclists & Roundabouts

You should give priority to cyclists on the roundabout. Expect them to be travelling more slowly than motorised traffic.

Give them plenty of room and allow them to move across your path as they travel around the roundabout.



Take particular care when exiting a roundabout: a cyclist in the left-hand lane may intend to continue around the roundabout.

To remain visible to other road users, cyclists may ride in the centre of their lane. Do not attempt to overtake them within their lane.

Highway Code rules 72 and 79 instruct cyclists on road positioning when using roundabouts. Full details on the correct procedure for using roundabouts can be found in rules 184-190.